

CERTIFICATE OF LOCATION OF GOVERNMENT CORNER

NORTHEAST Corner of Section 17, Township 107N, Range 40W

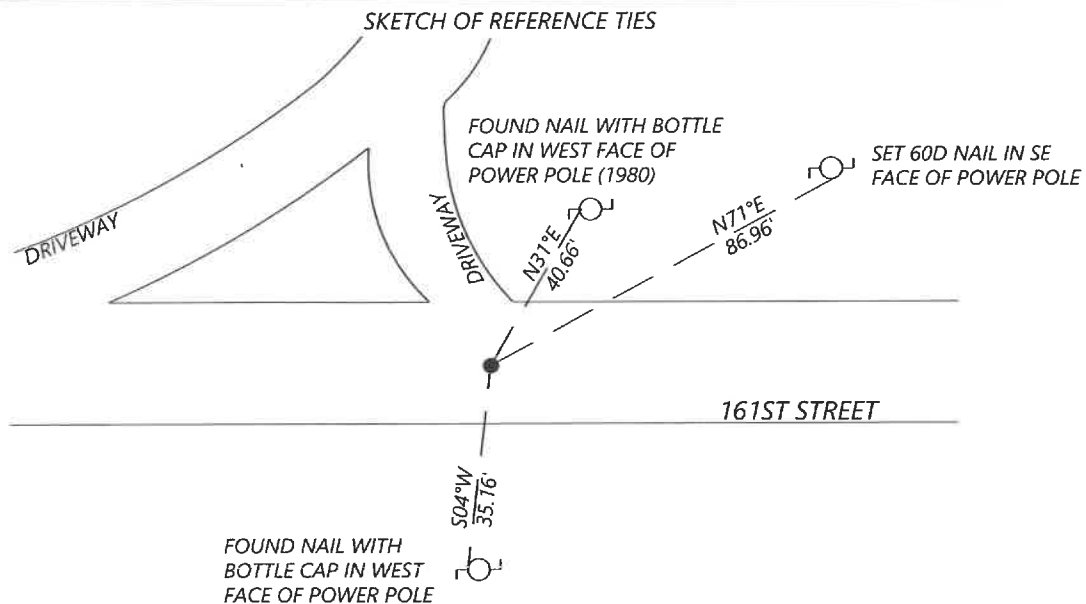
5th Principal Meridian, State of Minnesota, County of Murray.

At the corner location shown on the sketch:

☒ On 10/15/2021 found a 1/2" REBAR 0.4' BELOW THE ROAD SURFACE.
DATE

☒ left monument as found ☐ lowered monument ☐ removed monument (explain)

☐ On _____ placed a _____
DATE



N.T.S.

Statement of evidence for this corner location is on back of this page.

I hereby certify that this document was researched and prepared by me or under my direct supervision and that I am a licensed Land Surveyor under the laws of the State of Minnesota.

Signature [Signature]

Date 4-18-2022 License No. 57085

Title:

☒ Land Surveyor ☐ Professional Engineer
☐ County Surveyor ☐ County Engineer

OFFICE OF THE COUNTY RECORDER

County of Murray

I hereby certify that this document was filed in the Co.

Recorder's office at _____ M. on the
22nd day of April A.D. 20 22

County Recorder Karen Brown
by _____, Deputy

DOCUMENT NO. _____

SETH WECKMAN
Minnesota License No. 57085

Statement of Evidence:

Northeast corner of Section 17, Township 107 North, Range 40 West, 5th Principal Meridian, Murray County, Minnesota.

1861 Lewis Brockman, U.S. Deputy Surveyor, set a post in mound.

Undated Unknown, shows a stone for corner.

1913 J.W. Woolstencroft, in a road survey along the south line of Section 9, found a 10x12x16 stone with broken tile around.

1970 Bob Knoff, record shows a stone and iron.

1980 Murray County Engineer's Office, located a field stone and placed an iron pin over the top. Ties shown:
N&C PP NE 40.18'
N&C COR FE POST S 32.59'
N&C PP E/NE 82.74'

1988 Sioux Engineering, C. Allen Ringquist (LS 6700), files a corner certificate and states that a 1/2" iron stake was found at the intersection of roads 1" below surface.

1998 Zieske Land Surveying, Perry Zieske (LS 23008) files a survey and shows shows a found 5/8" iron stake.

1998 Minnesota Department of Transportation, C.S.A.H. 38 plans (S.P. 51-638-19), shows an iron pin above field stone.

2010 Bueltel-Moseng Land Surveying, Daniel L. Bueltel (LS 43844), files a survey and shows a twisted iron rod.

2017 Bueltel-Moseng Land Surveying, Daniel L. Bueltel (LS 43844), files a survey and shows a found monument.

2021 Westwood Professional Services searched the area and found a 1/2" rebar, 0.4ft below the road surface. Lines of occupation consist of an East/West gravel road. Measured distances to adjacent section corners agree with the 2010 and 2017 Beultel surveys and the 1998 Zieske survey. Found one tie which matches with the 1980 record within reason, and one tie of unknown origin. Accepting the found monument as the corner position and established one additional reference tie.

Analysis of the recovered data, field evidence and survey measurements, indicates that the monument found is the correct perpetuation of this corner. For additional information concerning this corner please contact Westwood Professional Services.